



# SPRING GROVE

## PRIMARY SCHOOL

Newsletter 5

Friday 28th November 2025

### Festive Events at Spring Grove

**Nursery Christmas Stay & Play**

**Thursday 4th December**

at 9:00 am in the Hall

**KS2 Festive Sing-along**

**Tuesday 9th December**

at 3:00 pm in the Hall

**Reception & KS1 Nativity**

**Thursday 11th December**

at 9:15 am in the Hall



### What Is Christmas Jumper Day?

**Thursday. 11th December**

**Christmas Jumper Day** is nearly here! This annual event invites everyone to join in the festive fun by wearing a cheerful Christmas jumper in support of a great cause.

This year, we'll be raising money for '**Save the Children**'. Children are welcome to bring a **£1 donation** to support the charity. You can also donate via our Just Giving page here. <https://tinyurl.com/ChristmasJumperDay2025>

We would love to see everyone get creative by decorating an old jumper to give it a festive makeover, rather than buying something new. It's a fun, eco-friendly way to celebrate while supporting a wonderful cause!

## Christmas JUMPER DAY



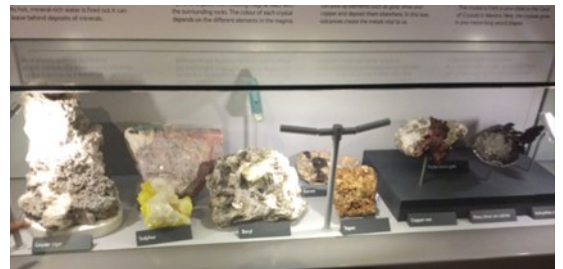
## Latest from Year 3 Rosen...

Year 3 have had a great start to this half term!

### Our visit to Natural History Museum



We have had our first school trip in Year 3, where we got to go and investigate lots of exciting facts related to our Stone Age and rocks topics. We were able to see and feel different types of rocks and find out how they were made. We experienced being in an earthquake, and actually felt the floor move under us!



We saw the bones of extinct animals that we have been learning about through our Stone Age topic and we even saw, held and dug up our own fossils which we then had to identify using a few clues. We looked at fossils which were discovered by **Mary Anning**, who we have been studying in our History and Science lessons. **The Dino Dig** workshop leader was really impressed with our knowledge.

In **English**, this half term, we have been looking at the non-fiction book, 'The Secrets of Stonehenge', and have found out lots of interesting facts. We learnt what historians think Stonehenge was made for and how long it took to build. We have discovered where Stonehenge is located in the world and that it is especially important during the Summer and Winter Solstices, when the sun lines up with the stones exactly.

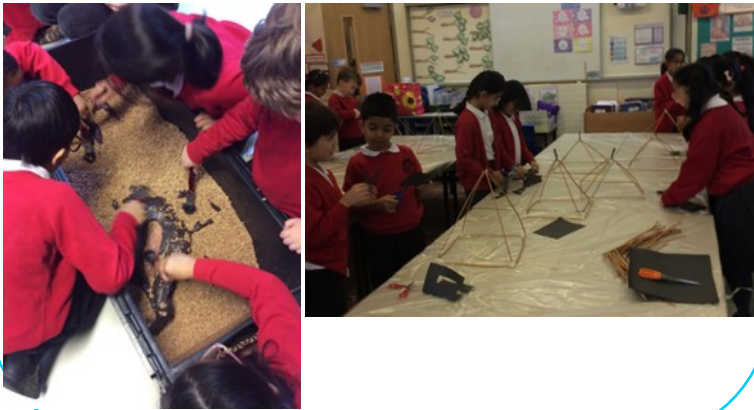
In **Maths**, we have been looking at addition and subtraction using the column method and seen the importance of carrying and exchanging to keep our answers correct. We have now begun to look at multiplication and how arrays can help us to group our wholes into parts. We are also looking at the 2, 5 and 10 multiplications.

*Continued ....P3*

*Continued from ....P2*

### Lantern making

We took part in lantern making for a community event called '**Lights in the sky**'. We were able to get creative and make silhouettes of our hopes and dreams which will be carried and celebrated by lots of local people. We had to build the frame of the lantern, using willow and masking tape. We then covered it in special tissue paper before adding cut out shapes and patterns to represent our future hopes and dreams. We really enjoyed it.



### Knife and Fork training

We built on our learning of how to hold a knife and fork, use them correctly as well as reminding us how to use our manners and be polite when eating. We discussed which hand we need to use for which utensil and why we hold them in that particular way. Once we were experts, we were allowed to butter, cut and eat some bread, which we really enjoyed.



### Outdoor Learning

We have been taking part in lots of outdoor learning in our lessons and have drawn our own cave paintings outside using charcoal, chalk and large pieces of paper. We also had to work together to make ourselves into letters to help spell out a word.



# IMPORTANT DATES

## AUTUMN TERM 2025

<b>Thursday 4th December</b>	Nursery Christmas Stay & Play at 9.00am	
<b>Tuesday 9th December</b>	KS2 Festive Sing-along at 3.00 pm	
<b>Thursday 11th December</b>	Christmas Jumper Day	
<b>Thursday 11th December</b>	Reception, Year 1 and 2 Nativity Performance at 9.15am	
<b>Wednesday 17th December</b>	Christmas Lunch— children can wear Christmas Jumpers	
<b>Wednesday 17th December</b>	FOSGS Christmas Disco - information to follow	
<b>Thursday 18th December</b>	Class Christmas Parties - information to follow	
<b>Friday 19th December</b>	<b>Last Day of Term - school closes at 1.30pm</b>	

**Christmas Holidays from Monday 22nd December to Friday 2nd January**

## SPRING TERM 2026

<b>Monday, 5th January</b>	INSET DAY—School Closed
<b>Tuesday 6th January</b>	First Day of Spring Term (Children return to school)

### IMPORTANT— Christmas-related activities (including class Christmas parties)

#### Please note:

- If you do not wish your child to participate in Christmas-related activities (including class Christmas parties), please email Mrs Colley stating your reason, and we will ensure alternative arrangements are made
- Due to space limitations, we kindly request that pushchairs are not brought into the Hall.